

HHLA PLT Italy

The gateway to Central Eastern Europe



HHLA

PLT Italy

Company of the **HHLA Network**

Key to HHLA PLT Italy success

Combining the strengths of the 4 partners

HHLA (75.01%)



- A leading European logistics company founded in 1885, headquartered in Hamburg
- Active in 4 segments in Europe:
 - 5 container terminals
 - Intermodal services, e.g. rail operator METRANS
 - Logistics services other than container
 - Real estate in Hamburg
- Shareholding through 100% subsidiary HHLA International

Francesco Parisi (12.15%)



- Family-led Italian logistics company, founded in 1807, headquartered in Trieste
- Active in Europe and Asia in 3 segments:
 - Freight forwarding and logistics
 - Shipping agency
 - Terminal operations experience (e.g. RoRo terminal)

I.CO.P (11.17%)



- Family-led Italian engineering company, founded in 1920, headquartered in Udine
- 80% owned by the founding Petrucco family
- Internationally constructing:
 - Bridges
 - Underpasses
 - Underground foundations
 - Microtunnels

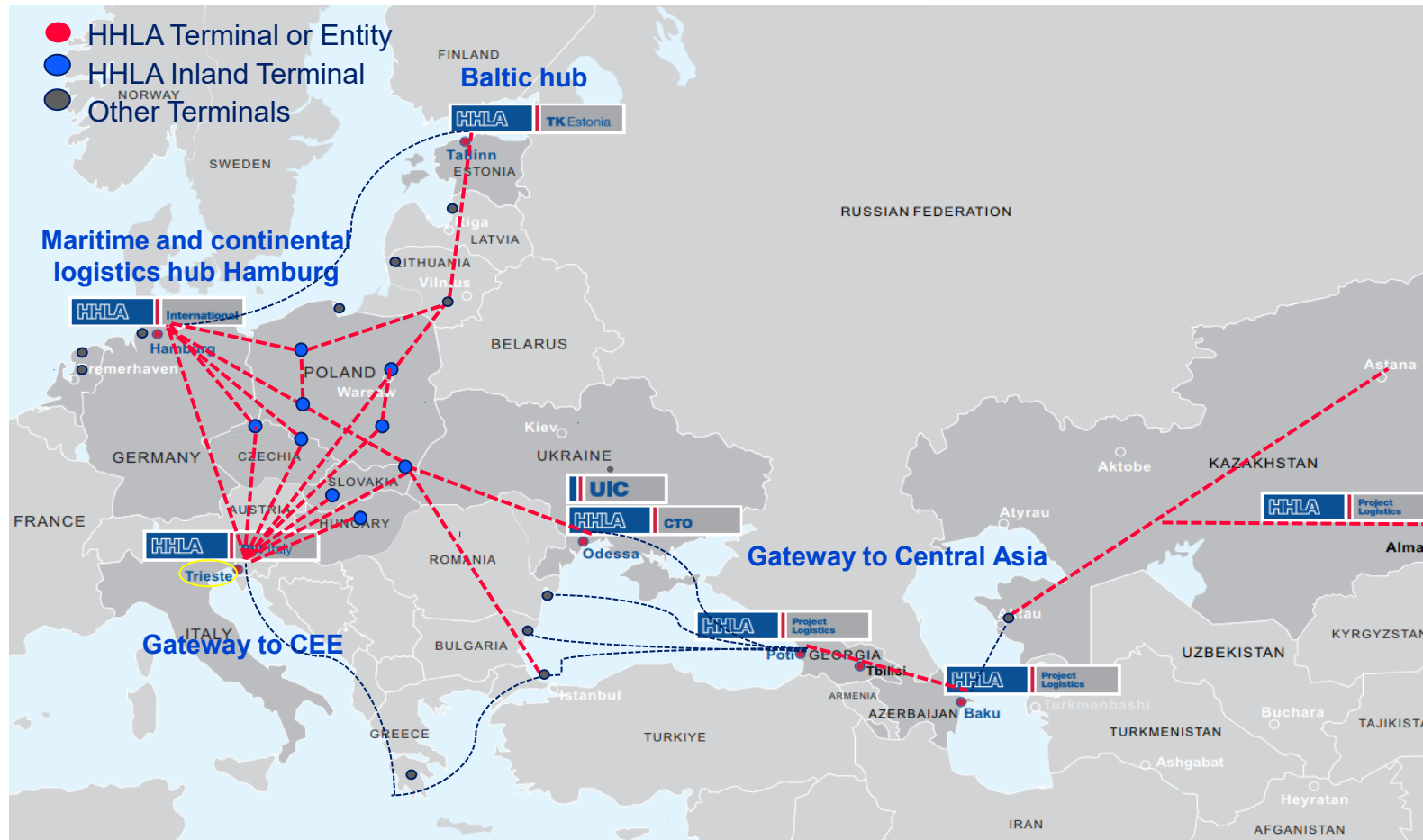
Interporto Bologna (1.67%)



- Owned by the Municipality of Bologna, founded in 1971
- Operator of biggest freight village in Italy, located in Bologna
- Services include i.a.:
 - Railway station (soon with connection to Trieste)
 - Logistics centers
 - Customs station
 - Fuel stations

The HHLA International GmbH (HIG) vision: A pan-European port and intermodal network ensuring efficient supply chains for Customers

Integration of maritime and hinterland networks for efficient supply chains

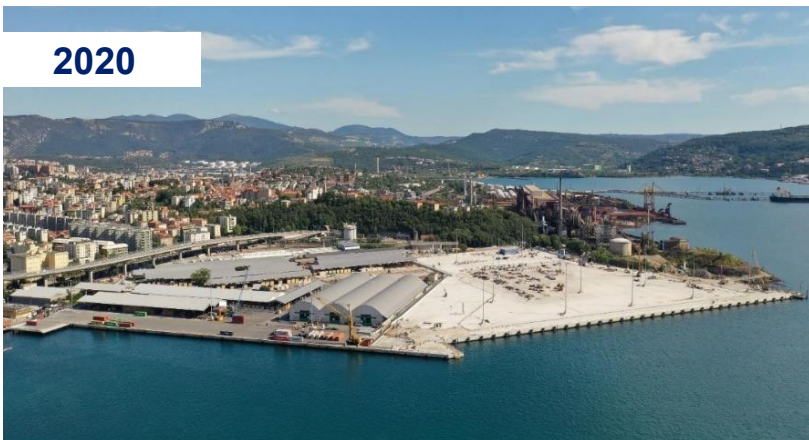


- In collaboration with the European TEN-T initiative
- Focus on development of interlinked regional hubs to efficiently serve the hinterland
- Both North – South flow as well as East – West flows
- Aiming to link the intermodal links of the different ports to create a network
- Strong believer in a Gateway (Hub) approach, ie. an efficient connecting point between maritime and land-based transport
- In parallel, development of efficient data flows to support physical goods movement (digitalization)

HHLA PLT Italy development

A fast growing multipurpose terminal

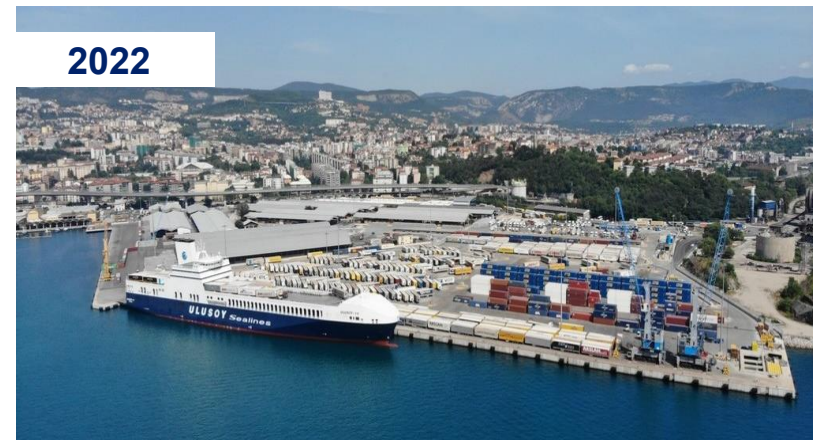
2020



2021



2022



2023



2024



2025



HHLA

PLT Italy

HHLA PLT Italy terminal in Trieste

The only **common user** and **multipurpose terminal** in the **Custom Free Port** area

HHLA PLT Italy in the port of Trieste



- Construction started 2014 as PPP with Port of Trieste,
- On January 7th 2021 official entry of HHLA as majority shareholder and rebranding from PLT into

‘HHLA PLT Italy’  

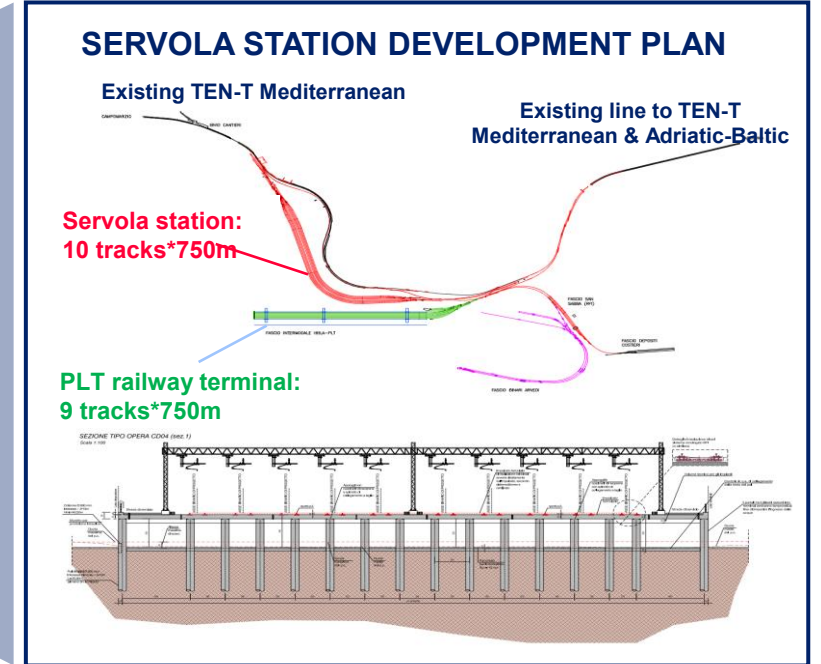
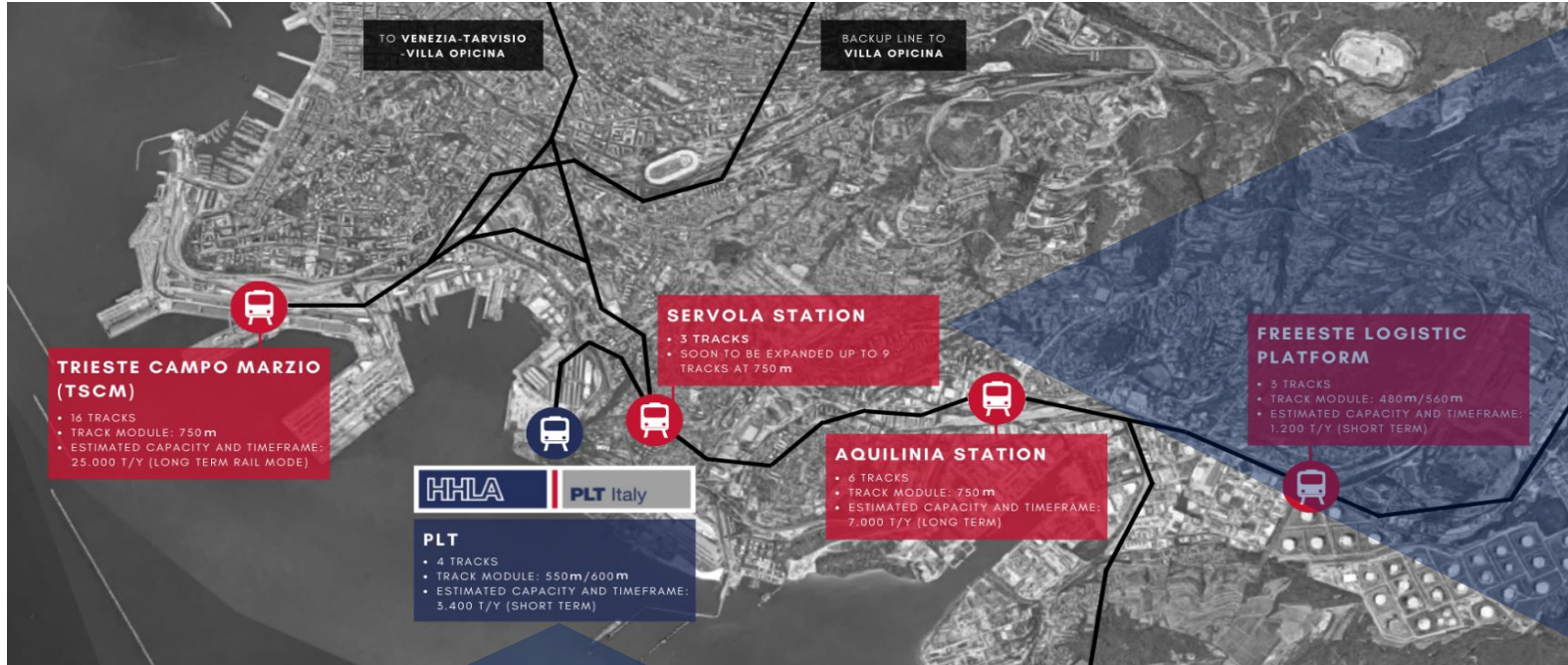
- Terminal focused on:
 - General Cargo in particular aluminum, coils, timber & CFS
 - Project Cargo
 - RoRo
 - Containers
 - Rail
- **Common user terminal, open for all customers**

Aerial view of the multipurpose terminal HHLA PLT Italy in the port of Trieste



Intermodal growth potential of HHLA PLT Italy

More than 50% of the rail capacity available for customers with ongoing significant improvements



Large reconstruction projects within the port of Trieste planned and financed, important for PLT:

- Opened direct access to Servola station freight line, with up to 10 tracks entirely dedicated to PLT to exit Trieste as an additional alternative to Campo Marzio station.
- Reactivation of Aquilinia station with 8 x 750 m tracks



Rail gateways from Trieste to Europe

VILLA OPICINA

- **Strategic position** close to the border between Italy and Slovenia, linking towards Villach, Vienna and Budapest.
- **Key link** for the Port of Trieste and inland terminals of FVG region with East-European countries.



TARVISIO

- **Strategic position** between Italy and Austria for transporting goods through the Alps.
- **Key link** connecting the Port of Trieste with important **industrial hubs** of Austria, Germany and other Central-European countries.



BRENNERO

- **Strategic position** between Italy and Austria for transporting goods through the Alps.
- **Key link** between Italy, Austria, Germany, Central-European countries and connection with important **industrial hubs**.



HHLA PLT Italy: a well-connected multipurpose terminal

SEA



Roro services

Ulusoy

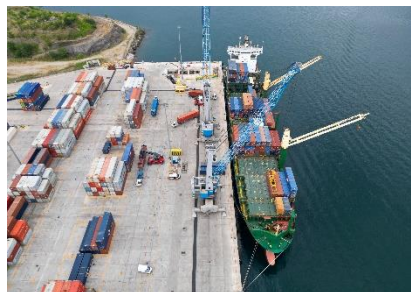
- 2 / week Cesme/Izmir – Trieste

DFDS

- 3 / week Mersin – Trieste

Grimaldi

- 3 / week Ambarli – Trieste



Container Services

MAERSK

- Port Said **Shuttle**
- **Feeder** Trieste – Ancona – Ravenna



General Cargo / Project Cargo / CFS

- 226k tons moved in 2024;
- 2 mobile harbor 125t lifting capacity, up to 200t with both;
- 2 mobile cranes with up to 65t and 52t lifting capacity;
- General cargo vessels' origin: India / Vietnam / Taiwan / Saudi Arabia / Qatar / Romania / USA / Brazil / Malaysia

HINTERLAND



Rail gateways from Trieste

- Villa Opicina
- Tarvisio
- Brennero

Rail services from PLT

Weekly connections

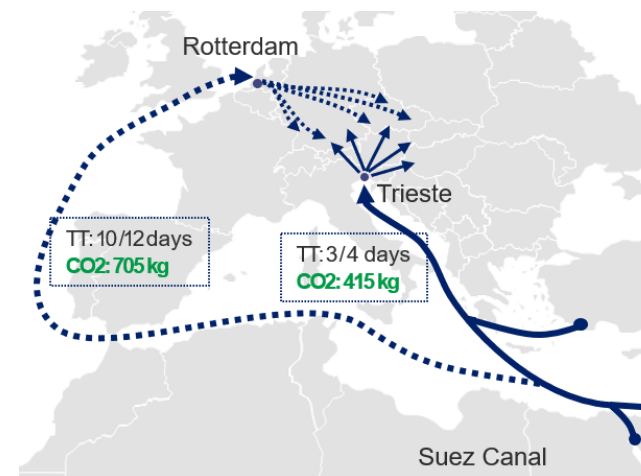
- Karlsruhe (Germany)
- Bettembourg (Luxembourg)
- Munich (Germany)
- Duisburg (Germany)
- Wels (Austria)

Inducement connections

- Padova (Italy)
- Piacenza (Italy)
- Rubiera (Italy)
- Koper (Slovenia)
- Budapest (Hungary)
- Dunajská Streda (Slovakia)

Under development

- Venlo (Netherlands)
- Mošov (Czech Republic)



The proposed development combines an efficient container terminal with a high-capacity rail and road connection

Extension of PLT quay/yard:

- Capable of serving simultaneously longest RoRo vessels and deep-sea container vessels in phase 1.

New container terminal:



- Phase 2 and beyond
- Highly automated
- Emission neutral
- Using latest technology
- Capable of serving largest container vessels
- Planned total capacity 1.6 Mio. TEU (but further expansion possible),
- Phase 1: 500k TEU.

Existing PLT Terminal



New rail terminal:

- Phase 1
- Up to 9 tracks at 750 m allowing handling of longest allowed trains
- Max. capacity > 40 / day = 280 trains / week

 : Existing PLT Terminal
 : Phase 1

Public project areas:

New railway marshalling yard:

- 10 tracks dedicated to PLT terminal
- Direct connection to the national rail network with > 50% capacity available

New highway connection:

- Direct connection to highway towards Venice, Udine and Ljubljana,
- Highways around Trieste not congested.

New Ro-Ro berth:

- In 2026 adding a 3rd **Ro-Ro** berth with dedicated yard.



Contacts

HHLA PLT Italy S.r.l
Via degli Alti forni snc
34145 Trieste

salesplt@hhl-plt.it

HHLA

PLT Italy